

OKLAHOMA DEPARTMENT OF TRANSPORTATION					
FED. ROAD DIST. NO.	STATE	PROJ. NO.	FISCAL YEAR	SHEET NO.	TOTAL SHEETS
	OKLA.				
DESCRIPTION			REVISIONS	DATE	

STATE OF OKLAHOMA  
DEPARTMENT OF TRANSPORTATION

SURVEY OF  
SH 74D  
SWO 4938(1)  
J/P NO. 28312(04)

LOGAN COUNTY  
S.H. 74D, BRIDGE OVER ROCK CREEK,  
1.7 MILES WEST OF S.H. 74

INDEX OF SURVEY SHEETS

- TITLE SHEET & SURVEYORS CERTIFICATION
- 2-3 HISTORICAL LETTER & WRITTEN REPORT
- ALIGNMENT REPORT
- COGO POINTS & BENCHMARK LIST
- 6-7 SURVEY DATA SHEETS
- 8-9 GEOMETRIC DATA SHEETS

SURVEY BEGAN: FEBRUARY 07, 2013.  
SURVEY COMPLETED: APRIL 30, 2013.

J.L. CARROLL, PROFESSIONAL LAND SURVEYOR  
BEN GENSAMER, LEAD SURVEYOR  
BRIAN GENSAMER, SURVEY CREW CHIEF  
MARCUS HEILMAN, CREW MEMBER  
LEE HORNBACK, CREW MEMBER

EQUIPMENT:

TRIMBLE R8 GNSS GPS RTK UNITS  
TRIMBLE TSC2 DATA COLLECTORS  
TRIMBLE S6 TOTAL STATION  
TRIMBLE ELECTRONIC LEVEL  
EAGLE POINT SOFTWARE IN MICROSTATION ENVIRONMENT

STATE OF OKLAHOMA  
DEPARTMENT OF TRANSPORTATION  
SURVEY DIVISION

SWO 4938(1) J/P 28312(04) ; S.H. 74D CO. LOGAN

**HORIZONTAL CONTROL:**  
 Oklahoma Coordinate System of 1927 Zone.  
 Oklahoma Coordinate System of 1983 (1983) NORTH Zone.  
 Oklahoma Dept. of Transportation Plane Coordinate System of 1927 Zone.  
 Oklahoma Dept. of Transportation Plane Coordinate System of 1983 Zone.  
 Arbitrary Coordinate System

**HORIZONTAL PLANE DATUM DEFINITION:**  
 Oklahoma Department of Transportation coordinates were derived by multiplying the Oklahoma Coordinate Systems of 1927 or 1983 by the combined adjustment factor of 0.99994. The ODOT Coordinate System is 2350 feet above sea level.

1. Primary Control adjusted to HARN ( ) Order  
 Stations PRCO, OKAO, AND OKPR  
 A) Closure before adjustment X ; Y Angles  
 Trav. Length No. Angles ; 1:  
 B) ; is ( ) Order before adjustment.  
 C) Method of Distance Measurement:  
 Electronic ( ) GPS ( ) Triangulation ( ) Chained  
 Instrument used for angles

2. Secondary Control adjusted to Primary Control ( ) Order  
 Stations L-42-650 AND 651  
 A) Closure before adjustment X ; Y Angles  
 B) Secondary Control ; is ( ) Order; Tied to CORS  
 C) Method of Distance Measurement:  
 Electronic (X) GPS ( ) Triangulation ( ) Chained  
 Instrument used for angles Trimble R8 GNSS RTK Receiver

VERTICAL CONTROL IS 1ST order. Level Line taken from L-42-650  
 (1ST order and tied to L-42-651 (1ST order. ( ) NGVD 29 datum (X) NAVD 88 datum

**ACCURACY DEFINITION:**  
 (1) HORIZONTAL: (3rd Order = Class I = 1:10,000'  
 (3rd Order = Class II = 1:5,000'  
 (1st Order = 0.017 Ft. x sqrt. of Mi.) (2nd Order = 0.035 Ft. x sqrt. of Mi.)  
 (3rd Order = 0.050 Ft. x sqrt. of Mi.)

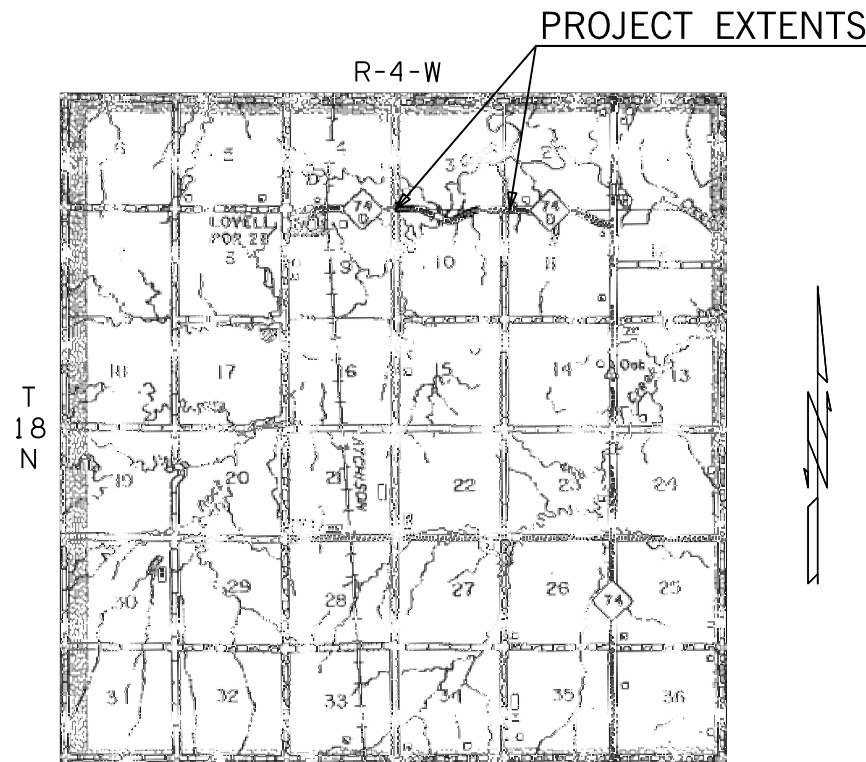
**Distribution:**  
 Copy w/survey reports  
 Copy in each Alignment  
 and level book

JESSE L. CARROLL  
 Professional Land Surveyor

30-Apr-13  
 Date

(FORM SD #20)  
 Rev. 11/03

Utility Companies	Phone Numbers
Telephone Lines: Pioneer Telephone	405-969-3303
Electric Lines: OG&E	405-553-3000
Gas Lines: Magellan Midstream Sunoco Logistics	580-234-6748 580-242-6028
Water Lines: Logan Co. RWD 3	580-935-6678



PROJECT LENGTH 5475.783 Ft. 1.04 MI.

BEGINNING STATION : 45+89.0000  
 ENDING STATION : 100+64.7830

STATE OF OKLAHOMA  
DEPARTMENT OF TRANSPORTATION

SWO 4938(1) Job/Piece 28312(04) Engr. Contract No. 1365-B

LAND SURVEYOR'S CERTIFICATION

I hereby certify that all land and property sub-division distances, angles, corners, and monumentation made or used in conjunction with this survey and depicted on recorded herein or hereon were recovered, established or re-established in substantial conformity with:

- Applicable instructions contained in the U.S. Government Bureau of Land Management publication "Manual of Survey Instruction";
- Its supplement, "Restoration of Lost or Obliterated Corners and Sub-division of Sections";
- "Oklahoma Minimum Standards for the Practice of Land Surveying" as adopted by the State Board of Licensure for Professional Engineers and Land Surveyors; and
- Sound land surveying practices;

including a thorough search, study, analysis and consideration of all existing records and field evidence.

I further certify that all survey monuments depicted exist and that all land survey work was done by me or under my direct supervision.

Dated this 30th day of April, 2013.

Jesse L. Carroll  
 Signature  
 JESSE L. CARROLL  
 4-30-2013  
 OKLAHOMA

Jesse L. Carroll

Oklahoma Licensed Land Surveyor No. 1071

Certificate of Authorization No. 2706

THIS SURVEY MEETS THE OKLAHOMA MINIMUM STANDARDS FOR THE PRACTICE OF LAND SURVEYING AS ADOPTED BY THE OKLAHOMA STATE BOARD OF REGISTRATION FOR PROFESSIONAL ENGINEERS AND LAND SURVEYORS, MAY 17, 2010.

SPECIFICATIONS FOR SURVEYS FOR PRIMARY AND SECONDARY HIGHWAYS DATED MAY 1, 1999 GOVERN.

SDS 1 OF 9



OKLAHOMA DEPARTMENT OF TRANSPORTATION SURVEY DIVISION	
PLS	JLC
DRAWN	BJG
CHECKED	JLC
APPROVED	JLC
CREW	CARROLL

**SURVEY DATA SHEET**

SWO 4938 (1) PROJECT NO. 28312(04) SHEET NO. SD1